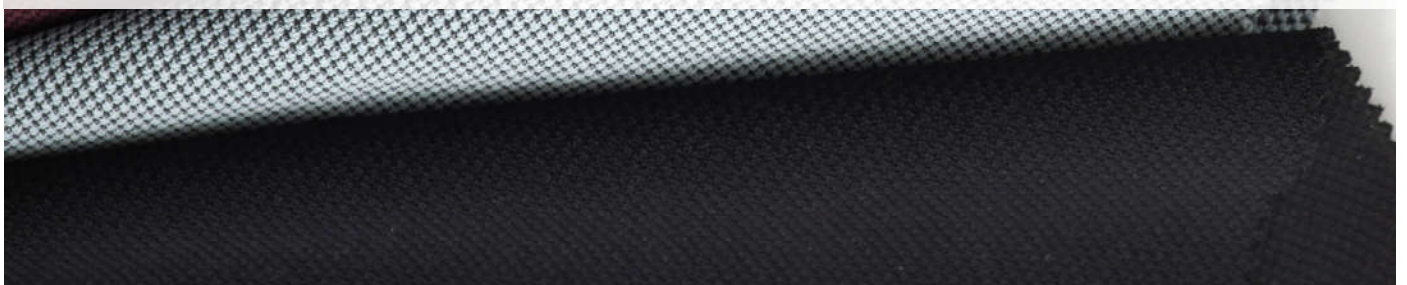




# Textiles

The cushions on all Humanscale chairs utilize advanced technology developed primarily for the sportswear and sporting goods industries. In a single step, a high-tech molding process combines the textile, foam or Technogel®, and plastic support shell into a single, modular unit which can be attached to our seating with four screws. Because of this advanced process, the textiles used on the cushions are as unique as the rest of the chair, and satisfy requirements more demanding than typical upholstery textiles.



## TEXTILES

\*Living Product Challenge Approved



<b>LOTUS*</b>		Code	Color
<b>Textile Code: K</b>	<b>Textile Grade: 1</b>	101	Black
Water repellent and easy to clean, Lotus is an ideal textile for the healthcare and hospitality environments. Its polyurethane finish with nylon backing boasts a soft texture that is pleasant to the touch while offering exceptional durability.		128	White
		158	Shale
		182	Hematite
		2C4	Umber
		281	Walnut
		302	Ochre
		459	Verdant
		507	Navy
		603	Plum
		608	Crocus
		624	Eggplant
		757	Earth Red
758	Lucky Red		

<b>FOURTIS*</b>		Code	Color
<b>Textile Code: FT</b>	<b>Textile Grade: 1</b>	10	Black
Fourtis is a four-way stretch fabric that easily conforms to our cushions for the ultimate in comfort and flexibility. While still adjustable, its satin crepe weave structure is highly durable and creates a strong, high-performance fabric.		12	Granite
		16	Ash
		44	Alaria
		49	Clover
		56	Nimbus
		57	Navy
		63	Boysenberry
		68	Hyacinth
		78	Winterberry

<b>FormSense Eco Knit*</b>		Code	Color
<b>Textile Code: KT</b>		10	Soft Black
Exclusively created for our Path chair, Revital is our FormSense Eco Knit™ that is made of 100% post-consumer recycled polyester. Derived from upcycled plastic bottles, this textile utilizes 3D knit technology that individually controls each stitch, creating intricate and systematic patterns with targeted zones of tension. This allows the material to fit the contours of the body, providing self-adjusting lumbar support that is tailored to fit every user.		11	Graphite
		12	Storm
		13	Vapor
		40	Peacock
		41	Moss
		42	Evergreen
		50	Midnight
		71	Wine
		73	Terracotta

<b>GINKGO</b>		Code	Color
<b>Textile Code: F</b>	<b>Textile Grade: 2</b>	101	Black
Composed of 90% Wool, Ginkgo offers a pleasing texture and durability. Its subtle and elegant pattern makes this textile appropriate for a variety of environments. Ginkgo comes in vibrant and saturated colors, expanding the scope of Human-scale's upholstery line.		197	Charcoal
		281	Walnut
		315	Wheat
		463	Green
		507	Navy
		556	Storm
		568	Horizon
		816	Harvest Orange

<b>CORDE 4*</b>		Code	Color
<b>Textile Code: CF</b>	<b>Textile Grade: 1</b>	10	Black
Corde 4 is a four-way stretch design which moves with the sitter as they adjust positions in their chair, providing ultimate comfort. Its intricate weave structure, dimensional surface and wide array of neutral and vibrant shades are visually appealing and engaging to the touch.		12	Graphite
		21	Dark Brown
		22	Driftwood
		43	Balsam
		45	Peacock
		52	Thalo
		56	Medium Gray
		57	Navy
		58	Azure
		62	Deep Violet
		78	Parma Red
		86	Pumpkin

## LEATHERS

*NOTE: Only matching stitch or contrast stitch options may be selected with each leather color*

<b>Ticino</b>	Code	Color	Matching Stitch Code	Contrast Stitch Code
<b>Textile Code: TL    Leather Grade: 1</b>	10	Obsidian	N	B, R, V
Ticino is a semi-aniline dyed leather available in a variety of rich colors inspired by nature. It is a top, corrected grain leather to create a more natural aesthetic and ensure the leather remains as unique as the hide itself.	11	Pebble	Y	–
	12	Charcoal	M	Y
	13	Glacier	W	–
	21	Umber	A	–
	22	Canyon	C	–
	31	Sand	V	–

<b>Corvara</b>	Code	Color	Matching Stitch Code	Contrast Stitch Code
<b>Textile Code: CL    Leather Grade: 3</b>	10	Onyx	N	B, R, V
Corvara is a semi-aniline dyed leather that offers a smooth, silky feel and ultimate durability. It is a top, full grain leather that is embossed lightly for a consistent, uniform grain structure.	11	Mineral	V	–
	21	Java	A	–
	23	Saddle	T	–
	57	Midnight	N	Y
	71	Jasper	H	–

<b>Maribo</b>	Code	Color	Matching Stitch Code
<b>Textile Code: ML    Leather Grade: 1</b>	ML10	Carbon	N
Maribo, a soft and pliable semi-aniline leather, created to provide unbeatable comfort and durability while keeping an elegant quality to the leather.	ML21	Espresso	V
	ML22	Teak	A
	ML12	Slate	T
	ML11	Stone	N
	ML31	Bone	H
	ML13	Frost	W
	ML23	Terra	T

<b>Leather Stitching Options</b>	Code	Color
Choose a stitch color to match or contrast your choice of leather.	V	Vanilla
	M	Midnight
	N	Noir
	C	Coffee
	Y	Light Grey
	W	White
	T	Tan
	A	Cocoa
	H	Cherry
	B	Blue
R	Red	



## MESH

All Mesh Options are Living Product Challenge Approved



MONOFILAMENT STRIPE	Code	Color
<b>Mesh Code: M</b>	10	Black
Using only monofilament yarns that are thin and strong, a simple but classic stripe pattern is achieved through weave structure and yarn placement. This pattern has slight elasticity but terrific memory.	11	Carbon
	14	Platinum
	41	Green
	51	Atlantic
	81	Amber

SILVER CHECK	Code	Color
<b>Mesh Code: C</b>	12	Alloy
This unique translucent pattern is achieved using monofilament and a silver-plated yarn spun with polyester at its core. More than simply an aesthetic choice, the silver-plated yarn gives the textile flexibility and strength.	32	Topaz

PINSTRIPLE	Code	Color
<b>Mesh Code: N</b>	01	White
Designed specifically to work with the Diffrient World Chair, this lightweight fabric provides the strength and support of a much heavier mesh by using two different monofilament stretch yarns to provide proper support.	02	Silver
	03	Graphite
	10	Black
	34	Cadmium Yellow
	43	Citron
	58	Cyan
	74	Crimson

## TEXTILE PURCHASE PROGRAM

All Humanscale textiles (with the exception of Leather) are available for purchase by the linear yard. The prices below are net (standard discounts do not apply). A \$20 cut charge will apply to each order. Please see your Humanscale representative for more information.

Monofilament Stripe	\$69/yd (50" width)
Silver Check	\$80/yd (53" width)
Lotus	\$41/yd (54" width)
Ginkgo	\$86/yd (51" width)
Dash	\$86/yd (48" width)
Pinstripe	\$74/yd (48" width)
Catena	\$69/yd (52" width)
Corde 4	\$52/yd (50" width)
Fourtis	\$46/yd (50" width)

CATENA	Code	Color
<b>Mesh Code: J</b>	10	Black
Catena's dense and rich hues are inspired by the vibrant spice markets of India. When used as a backrest textile, this proprietary non-stretch mesh provides a customized lumbar support through its tri-panel patented design that fits the user like a tailored shirt.	35	Bayberry
	50	Cornflower
	1A	Poppy Seed
	1B	Caraway

DASH	Code	Color
<b>Mesh Code: A</b>	14	Platinum
Designed to resemble embroidery floss, Dash is stronger, more responsive, lighter weight and uses less material than most mesh textiles. It gives the user support, comfort and ease of movement, while meeting Humanscale's seating requirements.	19	Zinc

## CUSTOM COLORS

### Textiles:

Most Humanscale textiles are available in any customer-specified color. Delivery time frames for custom color orders will depend on color approval. A surcharge of \$50 per chair will apply to custom color orders. The minimum order quantity for these fabrics are as follows:

### Lotus, Ginkgo:

Freedom Task + Headrest	200 chairs
Liberty Task	400 chairs
Diffrient Smart	400 chairs
Freedom Saddle	400 chairs
Freedom Pony Saddle	600 chairs

# Freedom Chair Frame Color Options



Graphite – G

Polished Aluminum  
with Graphite Trim – A

# Smart Chair Frame Color Options



Black with Black Trim – B



Dark Gray with Polished  
Aluminum Trim – D

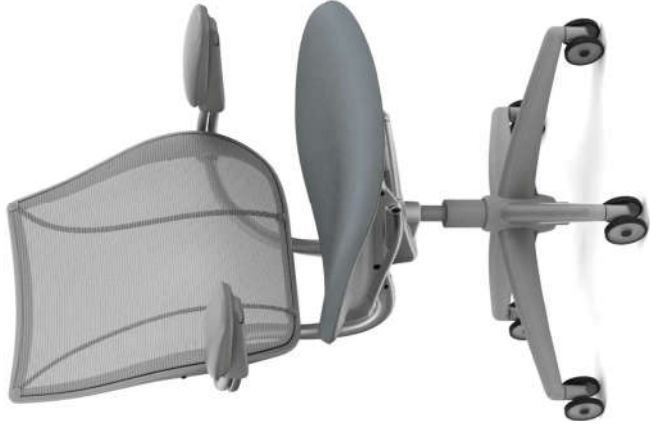


Black with Polished  
Aluminum Trim – C

# Liberty Conference/Task Chair Frame Color Options



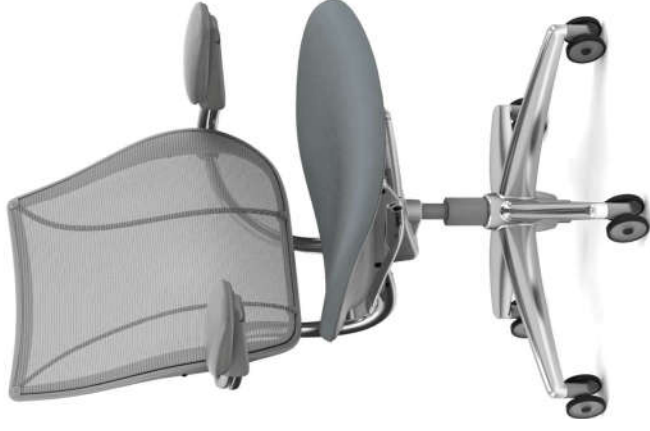
Black with Black Trim – B



Silver with Silver Trim– V



Polished Aluminum with  
Black Trim – A



Polished Aluminum with  
Silver Trim – P

# World Chair Frame Color Options



Black – B



White – W



Gray – V