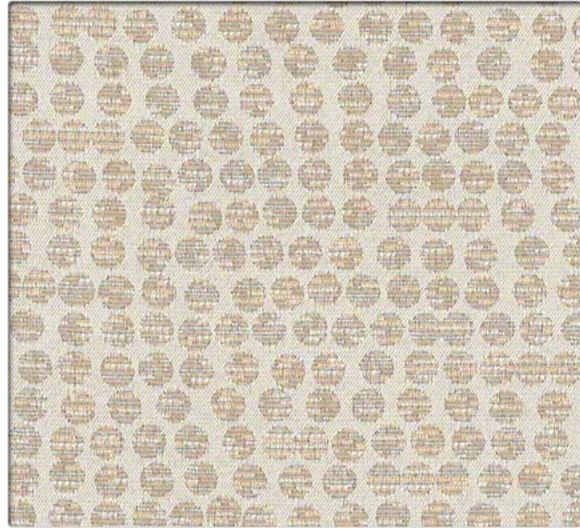
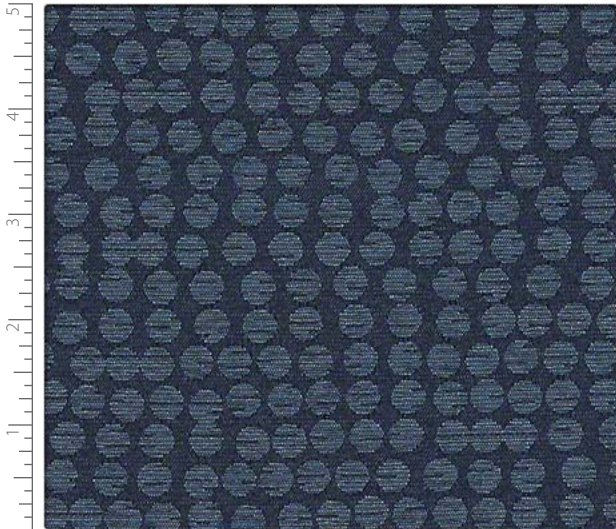


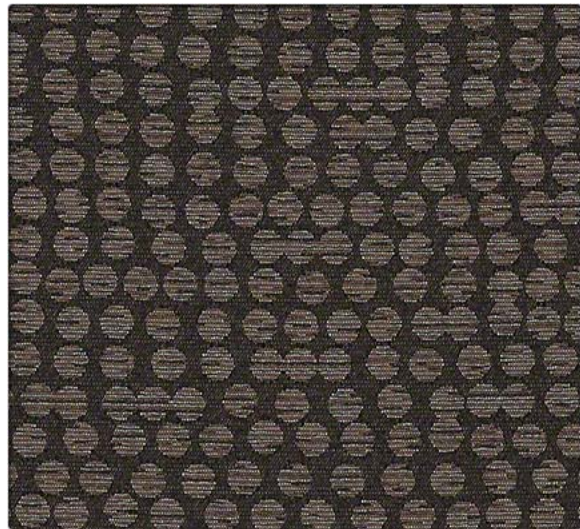
63761 Limelight



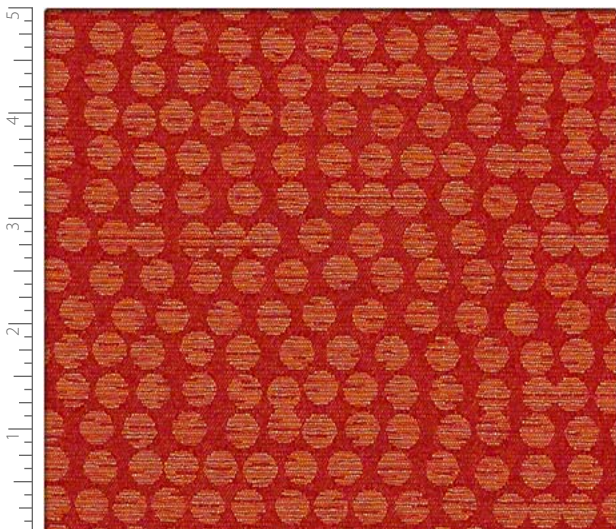
63762 Champagne



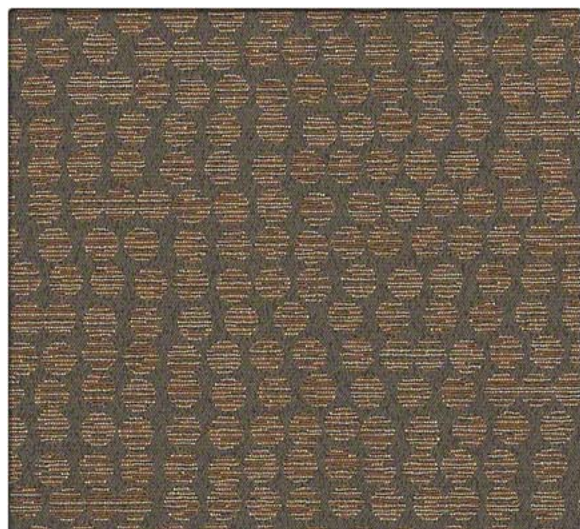
63763 Blue Moon



63767 Silhouette



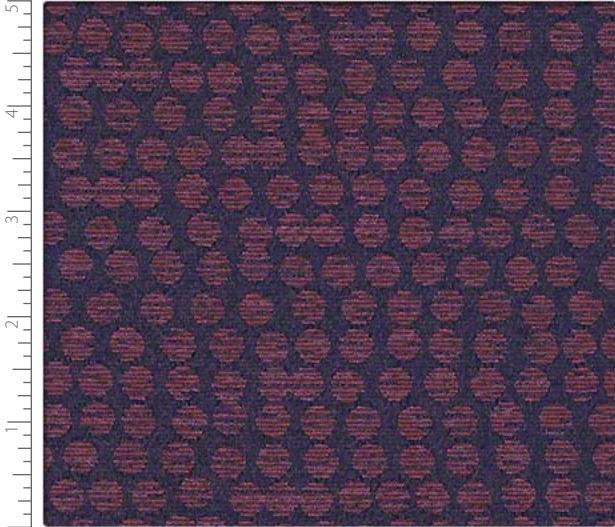
63765 Fuse



63766 Sable

Polka

PERFORMANCE FABRIC



63764 Very Berry

Polka

PERFORMANCE FABRIC

Grade 5

Performance Summary

- Enhanced soil + stain resistance
- Enhanced abrasion resistance
- Bleach-solution cleanable

Environmental

- GREENGUARD Gold Certified
- NSF/ANSI 336 FACTS Silver Certified
- Recycled content
- Non PFOA Stain Resistance
- No added flame retardants
- No added antimicrobials

Cleaning and Maintenance

Cleaning Code: **(W-S)** For water-based stains use water-based cleaners. For oil-based stains use solvent-based cleaners. We recommend using a professional cleaning service.

Bleach solutions of up to 10% may be used for more difficult stains.

Dye lots may vary slightly.

* This term and any corresponding data refer to the typical performance in the tests indicated and should not be construed to imply the behavior of this or any other material under actual fire conditions.

Specifications



Content	50% Polyester, 32% Post Industrial Recycled Polyester, 18% Post Consumer Recycled Polyester
Finish	Non-PFOA Stain Resistant
Backing	Acrylic
Weight	9.5 oz./lin. yd. ± 1.0 oz.
Width	54 inches
Repeat	Horizontal: 7.375 inches, Vertical: 21.875 inches, directional, non-match
Roll Size	60 yards
	Made in the USA

Performance Characteristics

Abrasion Resistance ASTM D-4157	Exceeds 50,000 double rubs - heavy duty
Break Strength ASTM D-5034	Warp: 160 lbs. min., Fill: 132 lbs. min.
Tear Strength ASTM D-2261	Warp: 10 lbs. min., Fill: 15 lbs. min.
Seam Slippage ASTM D-4034	Warp: 61 lbs. min., Fill: 75 lbs. min.
Brush Pilling ASTM D-3511	Class 5.0 min.
Colorfastness to Light AATCC-16	40 Hours, Class 4.0
Crocking AATCC-8	Dry: Class 4.0, Wet: Class 3.0

Flammability*

California Technical Bulletin 117-2013 Section 1	Passed
UFAC	Class 1
NFPA 260	Class 1



This product is produced using 50% recycled fiber.



Tel: 905.896.3434

Toll free: 1.800.363.8954

info@nightingalechairs.com

www.nightingalechairs.com

Stinson®

C.F. Stinson, LLC
2849 Product Drive
Rochester Hills, MI 48309

P 800 841 6279

F 248 299 3884

cfstinson.com