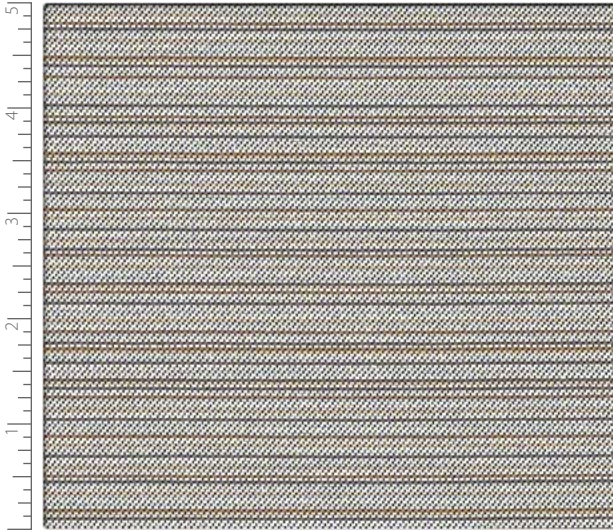
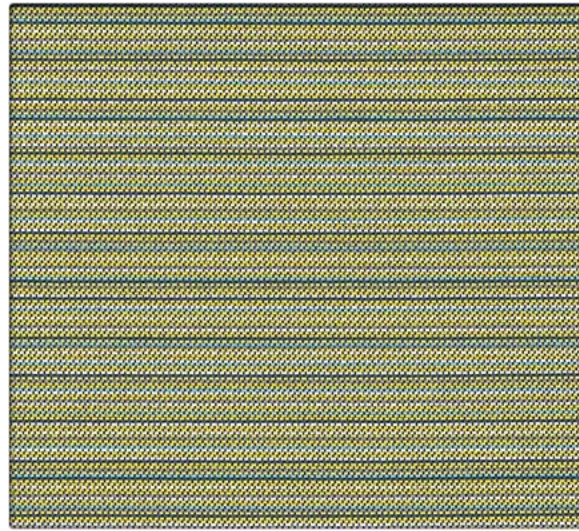


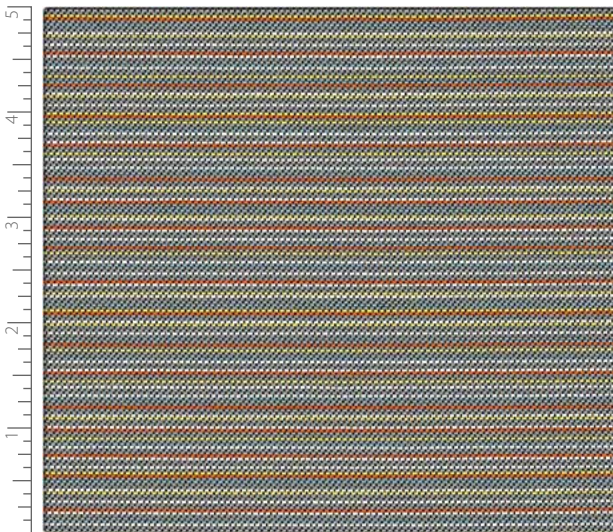
Lateral



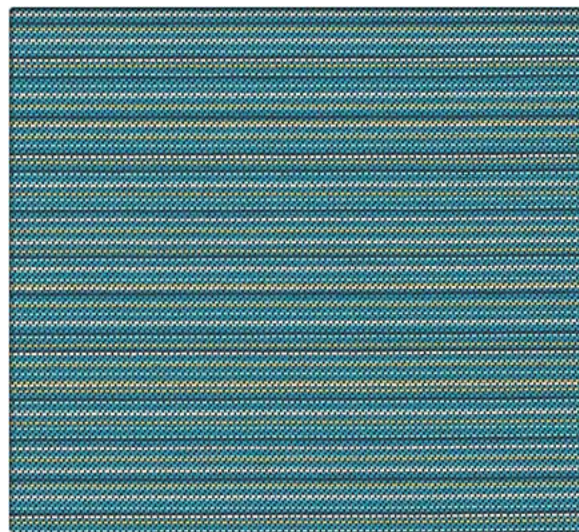
64840 Mist



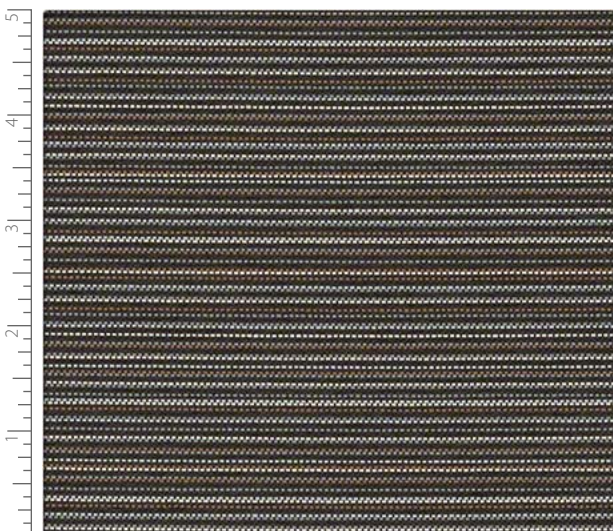
64841 Citrine



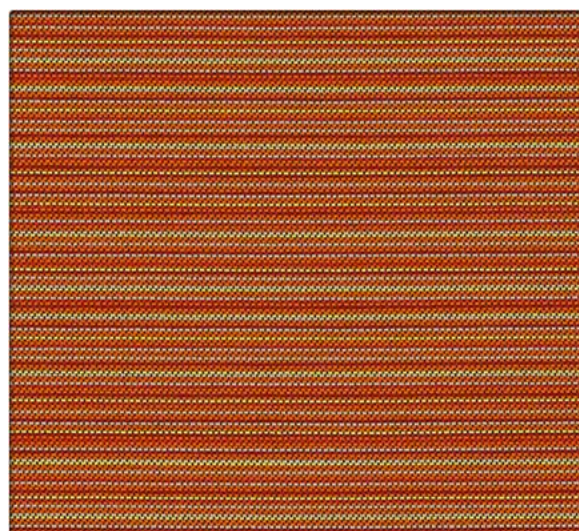
64842 Horizon



64843 Calypso

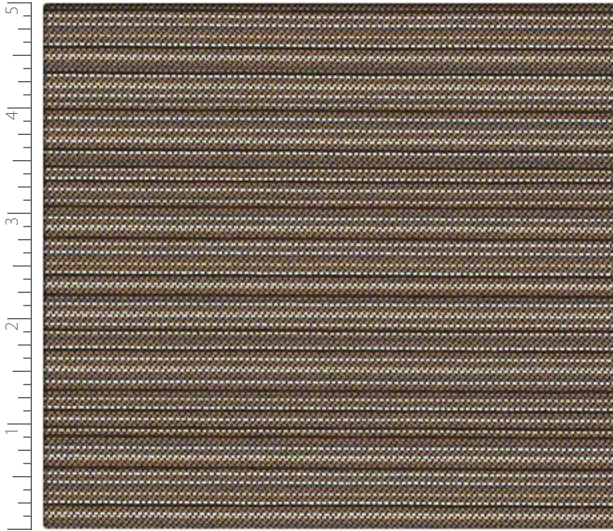


64848 Skyline

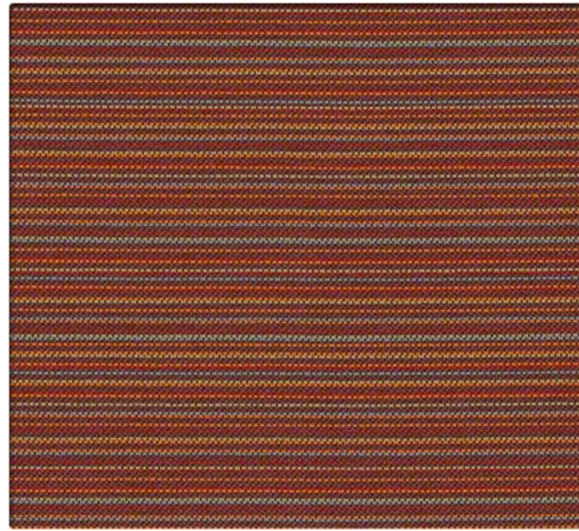


64845 Papaya

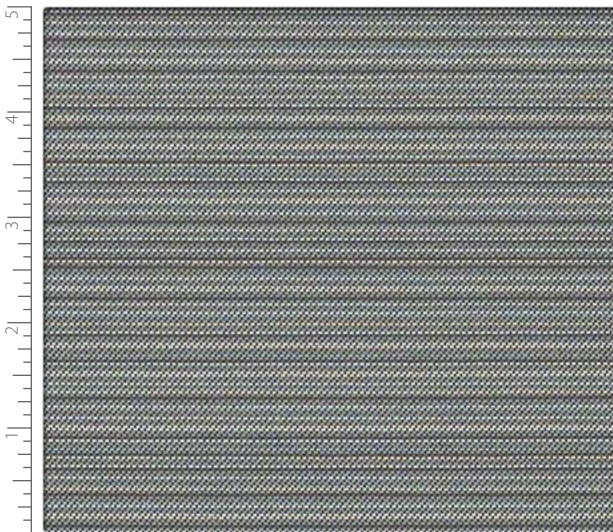
Lateral



64846 Peppercom



64847 Sangria



64844 Sterling

Lateral

Elementary Collection

PERFORMANCE FABRIC

Grade 5

Performance Summary

- Enhanced soil + stain resistance
- Enhanced abrasion resistance
- Bleach-solution cleanable

Environmental

- GREENGUARD Gold Certified
- Recycled content
- Non PFOA Stain Resistance
- No added flame retardants
- No added antimicrobials

Cleaning and Maintenance

Cleaning Code: **(W-5)** For water-based stains use water-based cleaners. For oil-based stains use solvent-based cleaners. We recommend using a professional cleaning service.

Bleach solutions of up to 10% may be used for more difficult stains.

Dye lots may vary slightly.

* This term and any corresponding data refer to the typical performance in the tests indicated and should not be construed to imply the behavior of this or any other material under actual fire conditions.

** Multiple factors affect fabric durability and appearance retention, including end-user application and proper maintenance. Wyzenbeek results above 100,000 double rubs have not been shown to be an indicator of increased lifespan.

Specifications



Content	65% Post Consumer Recycled Polyester, 35% Polyester
Finish	GreenShield® patented, nano-particle based, reduced environmental impact soil and stain protection
Backing	Acrylic
Weight	10.5 oz./lin. yd. ± 1.0 oz.
Width	54 inches
Repeat	Horizontal: 0.0 inches, Vertical: 4.375 inches, directional
Roll Size	80 yards

Performance Characteristics

Abrasion Resistance** ASTM D-4157	Exceeds 120,000 double rubs - heavy duty
Break Strength ASTM D-5034	Warp: 124.0 lbs. min., Fill: 222.0 lbs. min.
Tear Strength ASTM D-2261	Warp: 10.4 lbs. min., Fill: 24.9 lbs. min.
Seam Slippage ASTM D-4034	Warp: 76.5 lbs. min., Fill: 38.0 lbs. min.
Brush Pilling ASTM D-3511	Class 5.0 min.
Colorfastness to Light AATCC-16	60 Hours, Class 5.0
Crocking AATCC-8	Dry: Class 5.0, Wet: Class 5.0

Flammability*

California Technical Bulletin 117-2013 Section 1	Passed
UFAC	Class 1
NFPA 260	Class 1



This product is produced using 65% recycled fiber.



Tel: 905.896.3434
 Toll free: 1.800.363.8954
 info@nightingalechairs.com
 www.nightingalechairs.com



C.F. Stinson, LLC
 2849 Product Drive
 Rochester Hills, MI 48309

P 800 841 6279
 F 248 299 3884

cfstinson.com