

Textile Grade 1

Wave

This four-way stretch textile with a three-dimensional wave pattern offers a range of brilliant colors taken from nature. It exceeds all standards for contract upholstery.



Black (W101)



Graphite (W102)



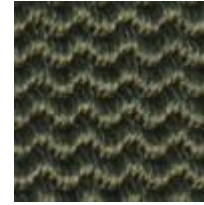
Smoke (W104)



Dark Brown
(W201)



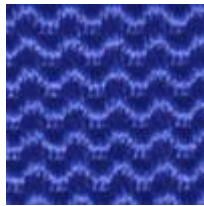
Rattan (W213)



Loden (W402)



Sage (W415)



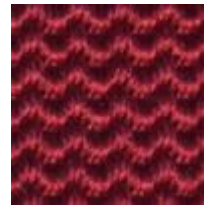
Blue (W502)



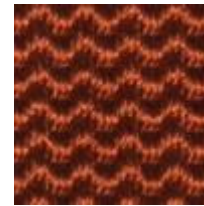
Navy (W507)



Ultraviolet
(W601)



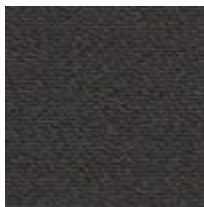
Poppy (W714)



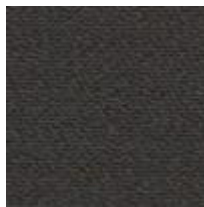
Cayenne (W803)

Vellum

Constructed from a blend of nylon, Cordura and elastic yarn, this four-way stretch textile offers a pleasing texture, while providing the extreme durability required for long-term use.



Black (V101)



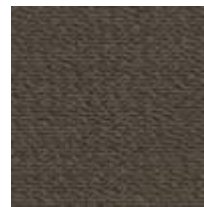
Graphite (V102)



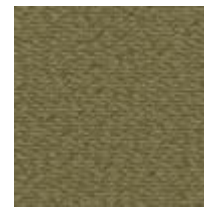
Ash (V106)



Light Gray
(V114)



Seal (V202)



Beech (V211)



Mahogany (V212)



Moss (V404)



Grass (V407)



Greenwood (V414)



Navy (V507)



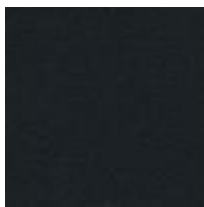
Periwinkle (V607)



Pomegranate (V713)

Lotus

This four-way stretch textile is water repellent and easy to clean, making it an ideal textile for healthcare and hospitality environments. Its polyurethane finish with nylon backing boasts a soft texture while offering exceptional durability. It exceeds all standards for contract upholstery and healthcare tests.



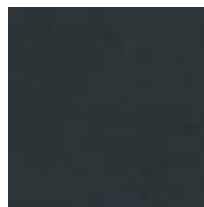
Black (K101)



White (K128)



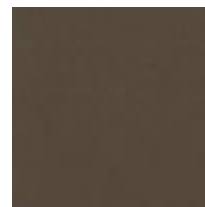
Shale (K158)



Hematite (K182)



Walnut (K281)



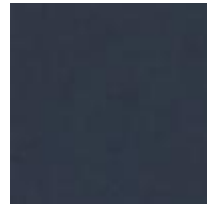
Umber (K2C4)



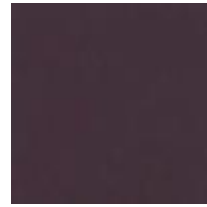
Ochre (K302)



Verdant (K459)



Navy (K507)



Plum (K603)



Crocus (K608)



Eggplant (K624)



Earth Red
(K757)



Lucky Red
(K758)

Textile Grade 2

Ginkgo

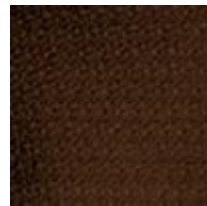
Composed of 90% Wool, Ginkgo offers pleasing texture and durability. Its subtle and elegant pattern makes this textile appropriate for a variety of environments. Ginkgo comes in vibrant and saturated colors, expanding the scope of Humanscale's upholstery line.



Black (F101)



Charcoal (F197)



Walnut (F281)



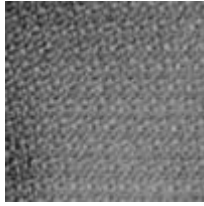
Wheat (F315)



Green (F463)



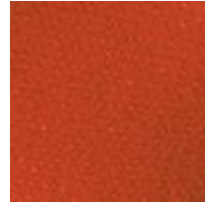
Navy (F507)



Storm (F556)



Horizon (F568)

Harvest Orange
(F816)

Textile Grade 3

Sensuede

Sensuede was developed to be the best and most luxurious engineered suede available. The faux suede's soft touch comes from the use of breathable and wrinkle resistant recycled microfibers that are finer than a human hair but are extra-strong, resulting in a very resilient fabric. This material also was selected because of its environmentally sensitive content and manufacturing process.



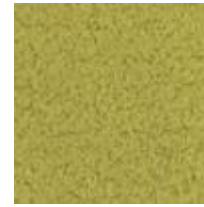
Ebony (D111)



Pewter (D115)

Chocolate
(D208)Goldenrod
(D305)

Olive (D406)



Pear (D411)



Persian (D517)



Oxblood (D712)

Leather Grade 1

Bizon

The innovative line of supple Bizon leathers has a thick, rich grain with excellent light fastness. Bizon offers a plain pigmented finish with exceptional strain protection and a very soft touch.



Black (Q111)



Terra (Q458)

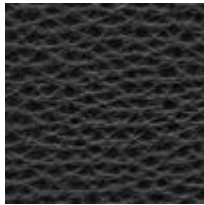


Miso (Q429)

Leather Grade 3

Cervo

Cervo is chromium tanned and aniline dyed. The unique tannage approximates the rich luxurious suppleness of deer skin. The clarity and depth of the aniline dyes provide a distinct beauty enhancing all the natural characteristics. Cervo is thicker than the other naked leathers in our collection. Specialized milling adds additional character providing a soft pebble grain texture unmatched by any other leather in its class.

Sasso Nero
(R1A7)Mantefalcone
(R2F0)

Aveto (R2E8)